

A Colorado Springs, CO



1. Head **northwest** on **E Pikes Peak Ave** toward **W Paisano Dr N**

go 118 ft
total 118 ft



↩ 2. Take the 1st left onto **S Nevada Ave/W Paisano Dr S**
Continue to follow S Nevada Ave
About 3 mins

go 1.3 mi
total 1.4 mi



25 3. Turn left to merge onto **I-25 S**
About 1 hour 12 mins

go 87.3 mi
total 88.7 mi



↗ 4. Take exit **52** for **I-25 S** toward **US-160 W/Walsenburg/Alamosa**

go 0.3 mi
total 88.9 mi



- ➔ 5. Keep right at the fork, follow signs for **US-160/I-25 BUS S** and merge onto **I-25BUS S**
About 5 mins



go 2.5 mi
total 91.5 mi



6. Turn right onto **US-160 W/W 7th St**
Continue to follow US-160 W
About 46 mins



go 47.0 mi
total 138 mi



7. Turn left onto **CO-159 S**
About 21 mins



go 20.3 mi
total 159 mi



8. Turn right onto **County Rd P**
About 8 mins

go 4.2 mi
total 163 mi



©2014 Google Map data ©2014 Google

142 9. Continue onto **CO-142 W**
About 17 mins

go 15.5 mi
total 178 mi



©2014 Google Map data ©2014 Google

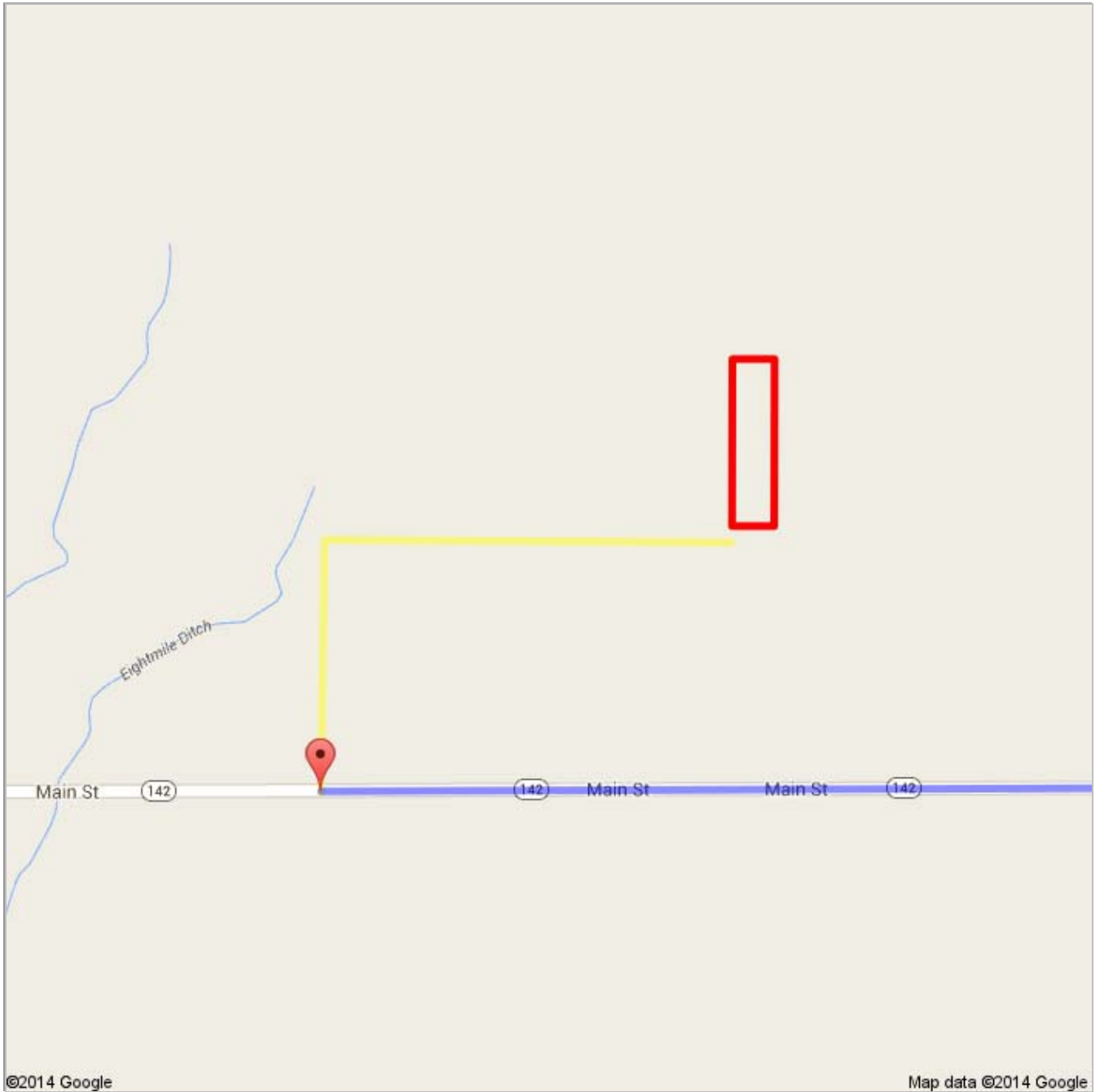
B CO-142 E



©2014 Google Map data ©2014 Google

These directions are for planning purposes only. You may find that construction projects, traffic, weather, or other events may cause conditions to differ from the map results, and you should plan your route accordingly. You must obey all signs or notices regarding your route.
Map data ©2014 Google

Directions weren't right? Please find your route on maps.google.com and click "Report a problem" at the bottom left.



6766.kmz

Public · 0 views
Created on May 9 · By Bryson · Updated < 1 minute ago



6766



From: Colorado Springs, CO




Driving directions to CO-142 E



To: CO-142 E

Continued Directions

 Unfortunately Google Maps doesn't recognize some of the roads in the area. The yellow line represents continued directions from the Google Maps ending point to the outline of your property a distance of 1.01 mile.

At the end of the Google directions turn right and continue 0.39 of a mile.

Turn right and continue 0.62 of a mile.

SW corner of property on left.