

Imagery ©2019 Landsat / Copernicus, Map data ©2019 Google

20 km

Lubbock

Texas, USA

Get on I-27 N/US-87 N

3 min (1.3 mi)

1. Head east on 19th St toward Dixie Dr
0.9 mi
2. Use the left lane to turn left onto I-27 Frontage Rd
285 ft
3. Use the left lane to take the ramp onto I-27 N/US-87 N
0.3 mi

Follow I-27 N to US-87 N in Swisher County. Take exit 61 from I-27 N/US-87 N

49 min (57.6 mi)

4. Merge onto I-27 N/US-87 N
57.2 mi
5. Take exit 61 to merge onto US-87 N toward Kress
0.4 mi

Follow US-87 N to S Gaines Ave in Tulia

13 min (13.7 mi)

6. Merge onto US-87 N
13.3 mi
7. Turn right onto SW 2nd St
0.1 mi

8. Turn right after Pizza Hut (on the right)

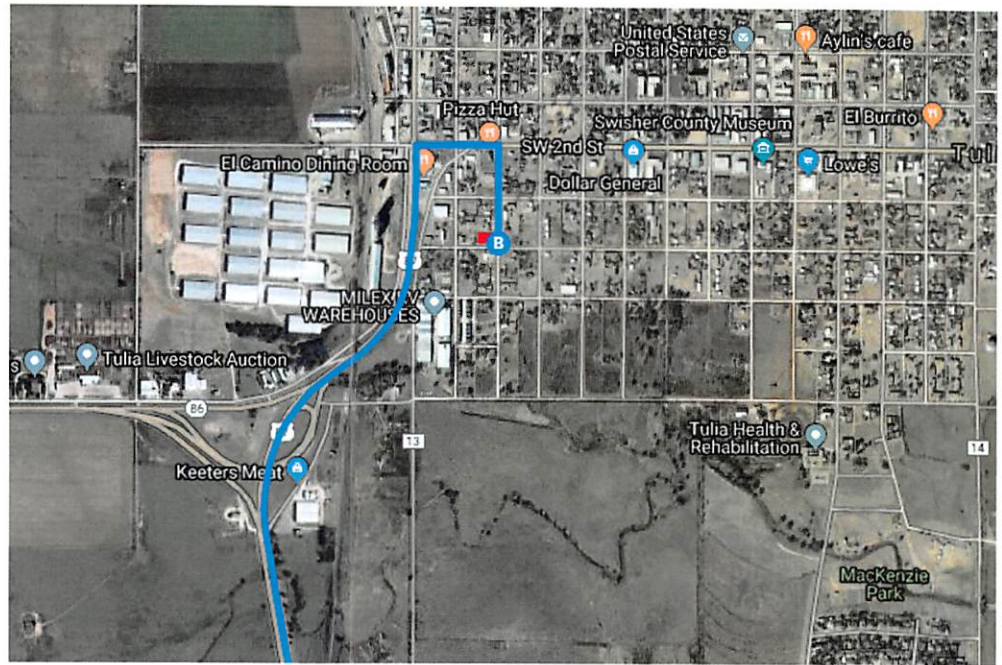
[Destination will be on the right](#)

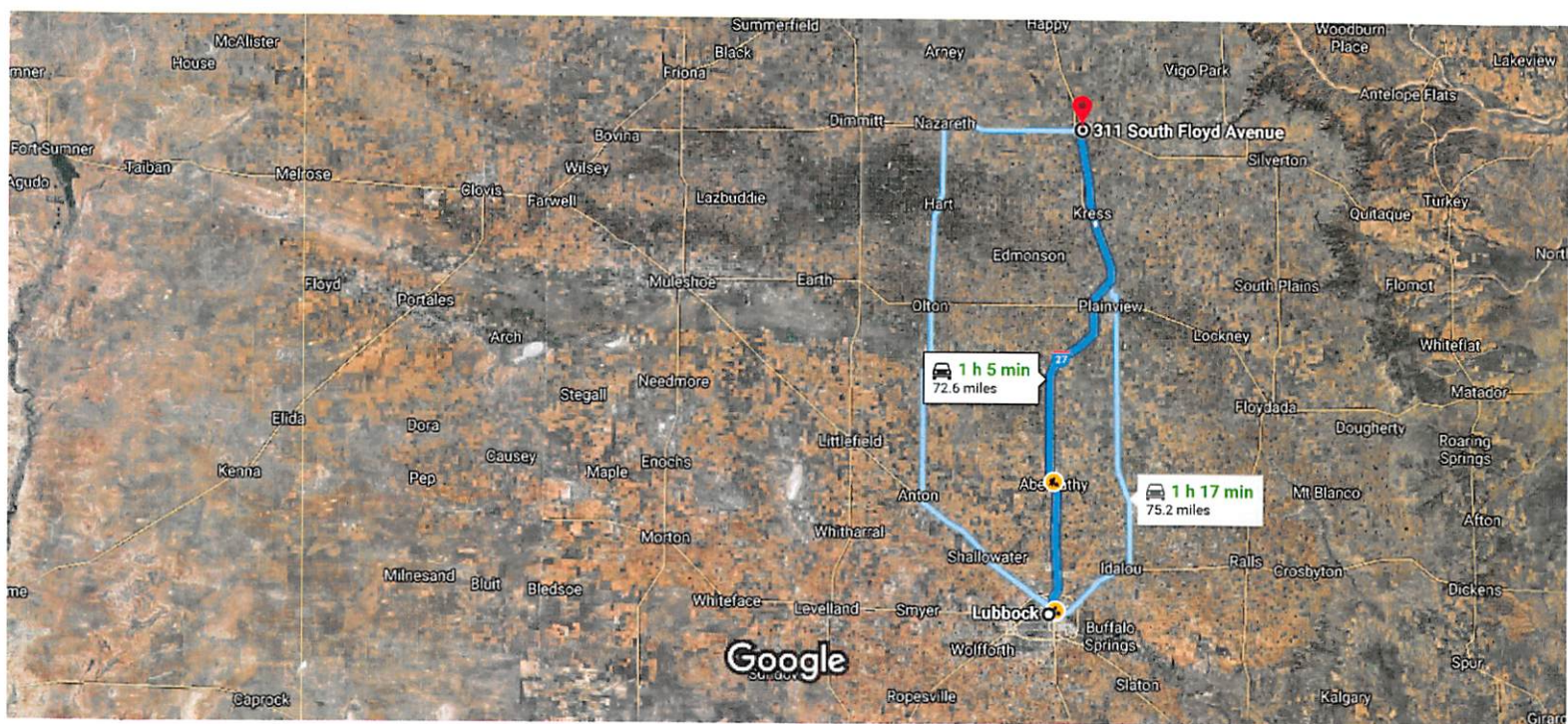
0.2 mi

400 S Gaines Ave

Tulia, TX 79088, USA

These directions are for planning purposes only. You may find that construction projects, traffic, weather, or other events may cause conditions to differ from the map results, and you should plan your route accordingly. You must obey all signs or notices regarding your route.





Imagery ©2019 Landsat / Copernicus, Map data ©2019 Google 20 km

Lubbock

Texas, USA

Get on I-27 N/US-87 N

- ↑ 1. Head east on 19th St toward Dixie Dr
3 min (1.3 mi)
- ↩ 2. Use the left lane to turn left onto I-27 Frontage Rd
0.9 mi
- ⬆ 3. Use the left lane to take the ramp onto I-27 N/US-87 N
285 ft
0.3 mi

Follow I-27 N to US-87 N in Swisher County. Take exit 61 from I-27 N/US-87 N

- ⬆ 4. Merge onto I-27 N/US-87 N
49 min (57.6 mi)
- ↘ 5. Take exit 61 to merge onto US-87 N toward Kress
57.2 mi
0.4 mi

Follow US-87 N to S Floyd Ave in Tulia

- ⬆ 6. Merge onto US-87 N
14 min (13.7 mi)
13.3 mi

- 7. Turn right onto SW 2nd St
📍 Pass by Pizza Hut (on the right)

0.2 mi

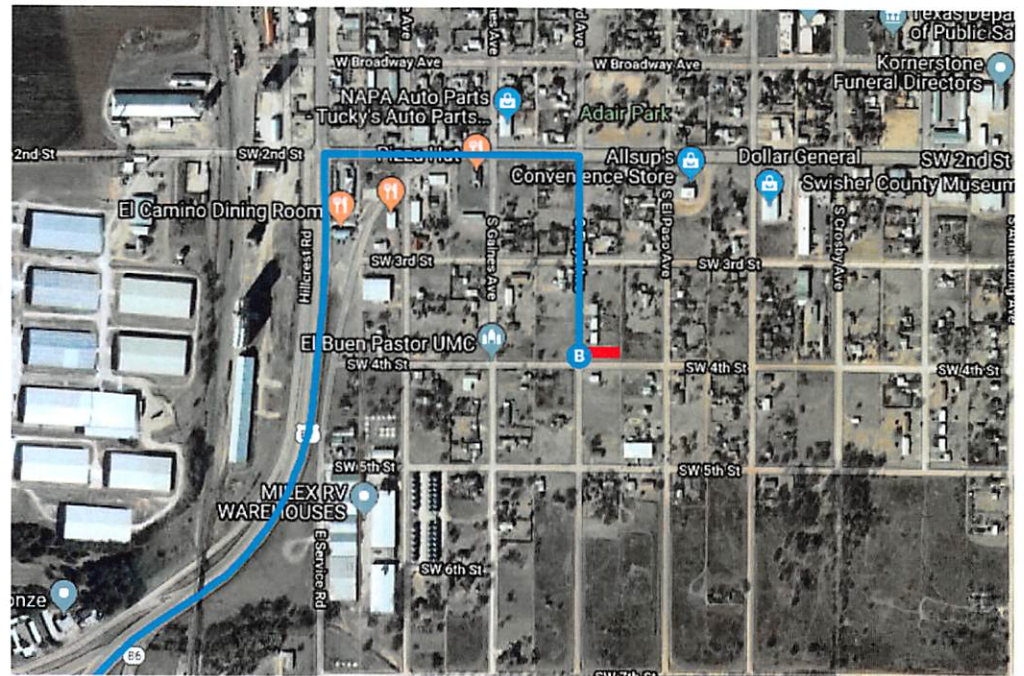
- 8. Turn right onto S Floyd Ave
📍 Destination will be on the left

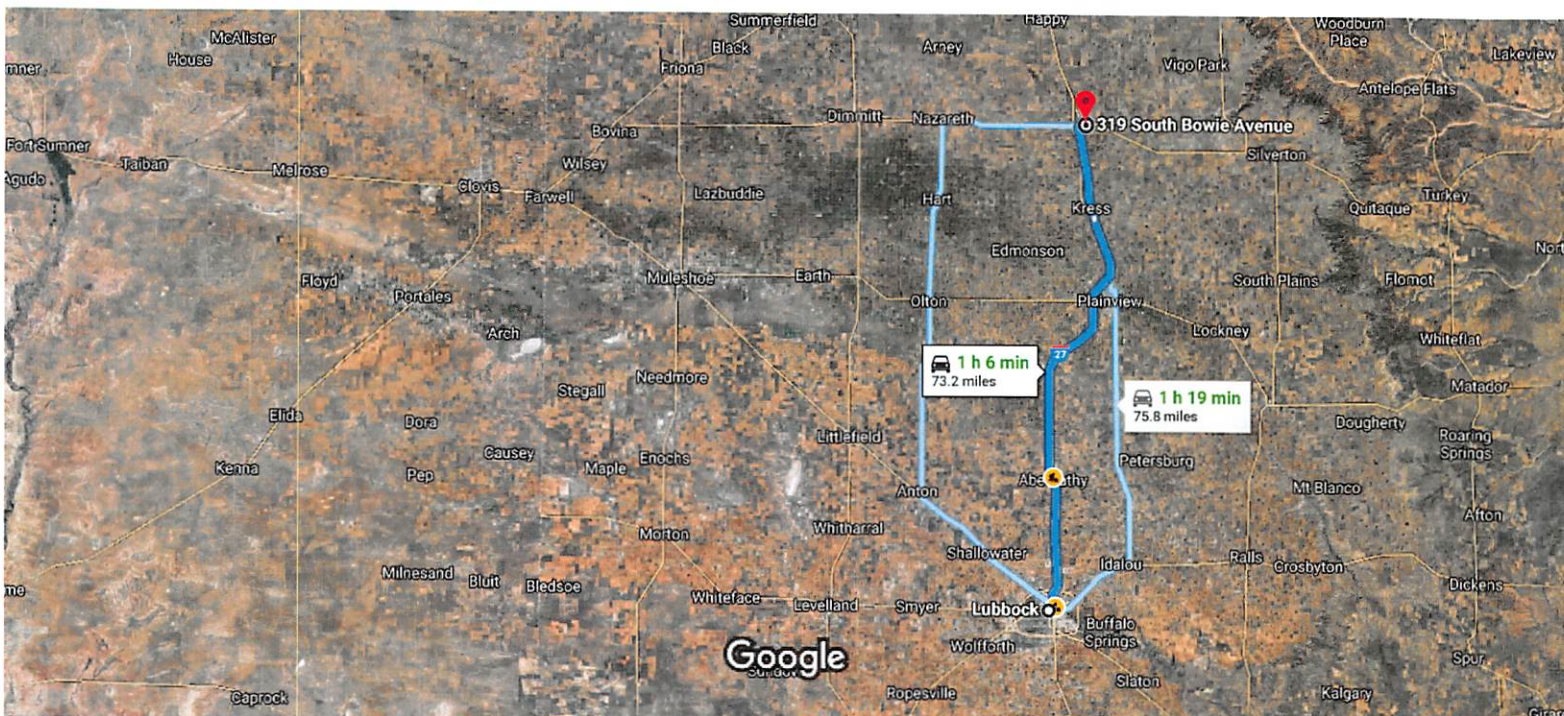
0.2 mi

311 S Floyd Ave

Tulia, TX 79088, USA

These directions are for planning purposes only. You may find that construction projects, traffic, weather, or other events may cause conditions to differ from the map results, and you should plan your route accordingly. You must obey all signs or notices regarding your route.





Imagery ©2019 Landsat / Copernicus, Map data ©2019 Google 20 km

Lubbock

Texas, USA

Get on I-27 N/US-87 N

3 min (1.3 mi)

- ↑ 1. Head east on 19th St toward Dixie Dr
0.9 mi
- ↩ 2. Use the left lane to turn left onto I-27 Frontage Rd
285 ft
- ⬆ 3. Use the left lane to take the ramp onto I-27 N/US-87 N
0.3 mi

Follow I-27 N to US-87 N in Swisher County. Take exit 61 from I-27 N/US-87 N

49 min (57.6 mi)

- ⬆ 4. Merge onto I-27 N/US-87 N
57.2 mi
- ↘ 5. Take exit 61 to merge onto US-87 N toward Kress
0.4 mi

Follow US-87 N to S Bowie Ave in Tulia

15 min (14.3 mi)

- ⬆ 6. Merge onto US-87 N
13.3 mi

- 7. Turn right onto SW 2nd St
📍 Pass by Pizza Hut (on the right)

0.8 mi

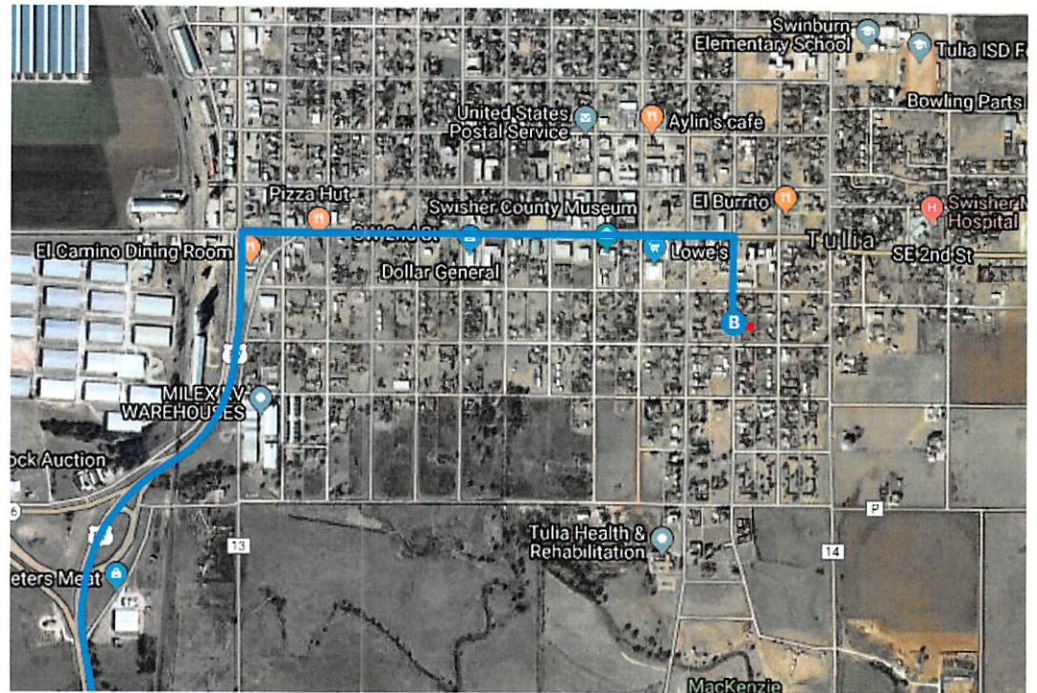
- 8. Turn right onto S Bowie Ave
📍 Destination will be on the left

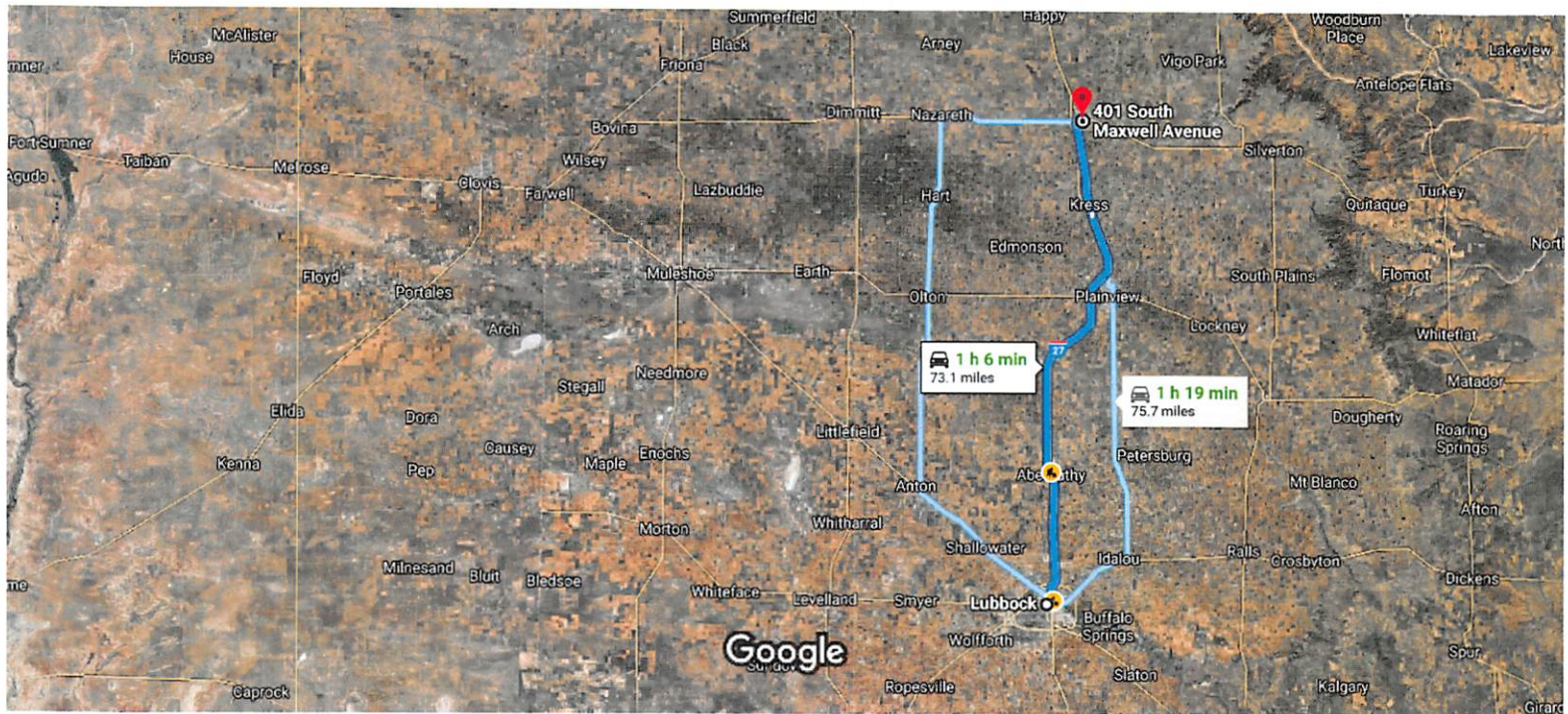
0.1 mi

319 S Bowie Ave

Tulia, TX 79088, USA

These directions are for planning purposes only. You may find that construction projects, traffic, weather, or other events may cause conditions to differ from the map results, and you should plan your route accordingly. You must obey all signs or notices regarding your route.





Imagery ©2019 Landsat / Copernicus, Map data ©2019 Google 20 km

Lubbock

Texas, USA

Get on I-27 N/US-87 N

3 min (1.3 mi)

1. Head east on 19th St toward Dixie Dr
0.9 mi
2. Use the left lane to turn left onto I-27 Frontage Rd
285 ft
3. Use the left lane to take the ramp onto I-27 N/US-87 N
0.3 mi

Follow I-27 N to US-87 N in Swisher County. Take exit 61 from I-27 N/US-87 N

49 min (57.6 mi)

4. Merge onto I-27 N/US-87 N
57.2 mi
5. Take exit 61 to merge onto US-87 N toward Kress
0.4 mi

Follow US-87 N to S Maxwell Ave in Tulia

15 min (14.2 mi)

6. Merge onto US-87 N
13.3 mi

- ➡ 7. Turn right onto SW 2nd St
📍 Pass by Pizza Hut (on the right)
- ➡ 8. Turn right onto S Maxwell Ave
📍 Destination will be on the left

0.7 mi

0.2 mi

401 S Maxwell Ave

Tulia, TX 79088, USA

These directions are for planning purposes only. You may find that construction projects, traffic, weather, or other events may cause conditions to differ from the map results, and you should plan your route accordingly. You must obey all signs or notices regarding your route.

