

Map data ©2018 Google 10 mi

Nashville

Tennessee

- ↑ 1. Head southwest on Church St toward Capitol Blvd
3 min (0.6 mi)

Take I-24 W to TN-237 W/Rossvie Rd in Montgomery County. Take exit 8 from I-24 W

- ↘ 2. Turn right onto George L Davis Blvd
157 ft
- ⤴ 3. Use the left lane to merge onto I-40 W/I-65 N via the ramp to Memphis/Louisville
1.0 mi
- ↘ 4. Keep right to continue on I-65 N, follow signs for I-24 W/Louisville/Clarksville
4.3 mi
- ↘ 5. Keep left at the fork to continue on I-24 W, follow signs for Clarksville/Interstate 24 W
36.6 mi
- ↘ 6. Take exit 8 for TN-237/Rossvie Rd
0.3 mi

Take 101st Airborne Division Pkwy and TN-374 to US-79 S

- ↙ 7. Turn left onto TN-237 W/Rossvie Rd
2.4 mi

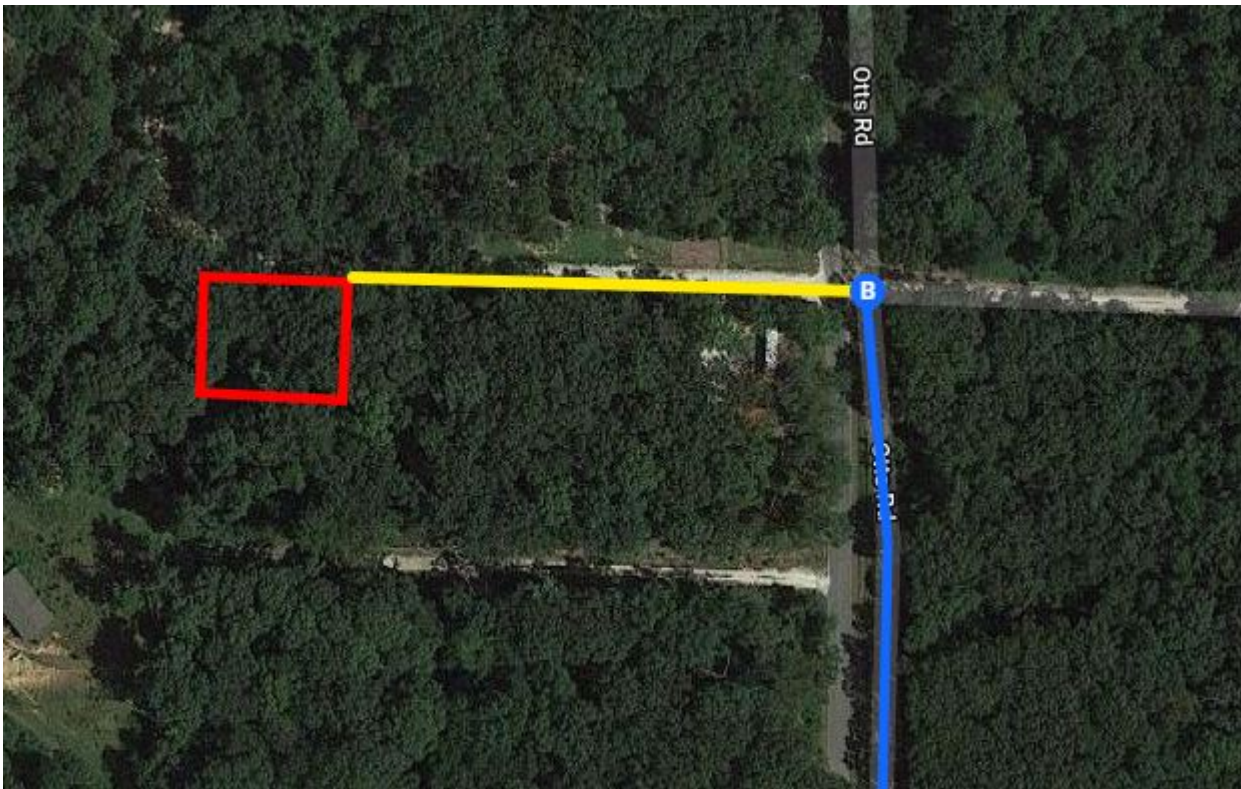
- 8. Turn right onto Warfield Blvd 1.6 mi
- 9. Continue onto 101st Airborne Division Pkwy 6.3 mi
- 10. Continue onto TN-374/Purple Heart Pkwy 4.5 mi
Continue to follow TN-374
- 11. Turn right onto US-79 S 41 min (38.8 mi)
Pass by Dollar General (on the left in 26.8 mi)

Follow TN-119 N and Cypress Rd to Otts Rd

- 12. Turn right onto TN-119 N 7 min (4.4 mi)
- 13. Turn right onto Cypress Rd 1.9 mi
- 14. Continue straight onto Otts Rd 2.0 mi
- 15. Continue straight onto Otts Rd 0.4 mi

372 Catfish Rd

Buchanan, TN 38222



Continued Directions

At the end of the Google Earth directions turn left and continue for 400 feet. NE corner of property on left.