

Map data ©2018 Google 20 mi

Minneapolis

Minnesota

Get on I-35W N

- ↑ 1. Head southeast on S 4th St toward S 5th Ave/Fifth Ave S 4 min (1.0 mi)
 - ↩ 2. Keep left to continue on Washington Ave SE 0.7 mi
 - ↩ 3. Use the left 2 lanes to turn slightly left at I-35W Onramp 0.1 mi
- 0.2 mi

Take MN-36 E, WI-64 E, US Hwy 63 N and US-8 E to WI-40 N in Bruce

2 h 12 min (119 mi)

- 4. Merge onto I-35W N 3.9 mi

- 5. Continue straight to stay on I-35W N 0.6 mi

- 6. Keep right at the fork to continue on MN-36 E 20.7 mi

- 7. Continue onto State Trunk Hwy 64 2.3 mi
i Entering Wisconsin

- 8. Continue onto WI-64 E/State Trunk Hwy 64 E 21.1 mi

- 9. At the traffic circle, take the 2nd exit onto US Hwy 63 N 5.0 mi

- 10. Turn left to stay on US Hwy 63 N 20.4 mi

- 11. Turn right onto US-8 E/US Hwy 63 N 1.3 mi

- 12. At the traffic circle, take the 2nd exit onto US-8 E 20.8 mi
i Pass by Subway (on the left in 14.2 mi)

- 13. Turn right onto US-8 E/14th Ave/E Main St 22.6 mi
i Continue to follow US-8 E

Continue on WI-40 N. Drive to W Druwe Rd in Meadowbrook

- 14. Turn left onto WI-40 N 24 min (20.4 mi)

- 15. Turn right onto Co Hwy D/West County Rd D 16.0 mi

- 16. Turn right onto N Lund Rd 2.5 mi

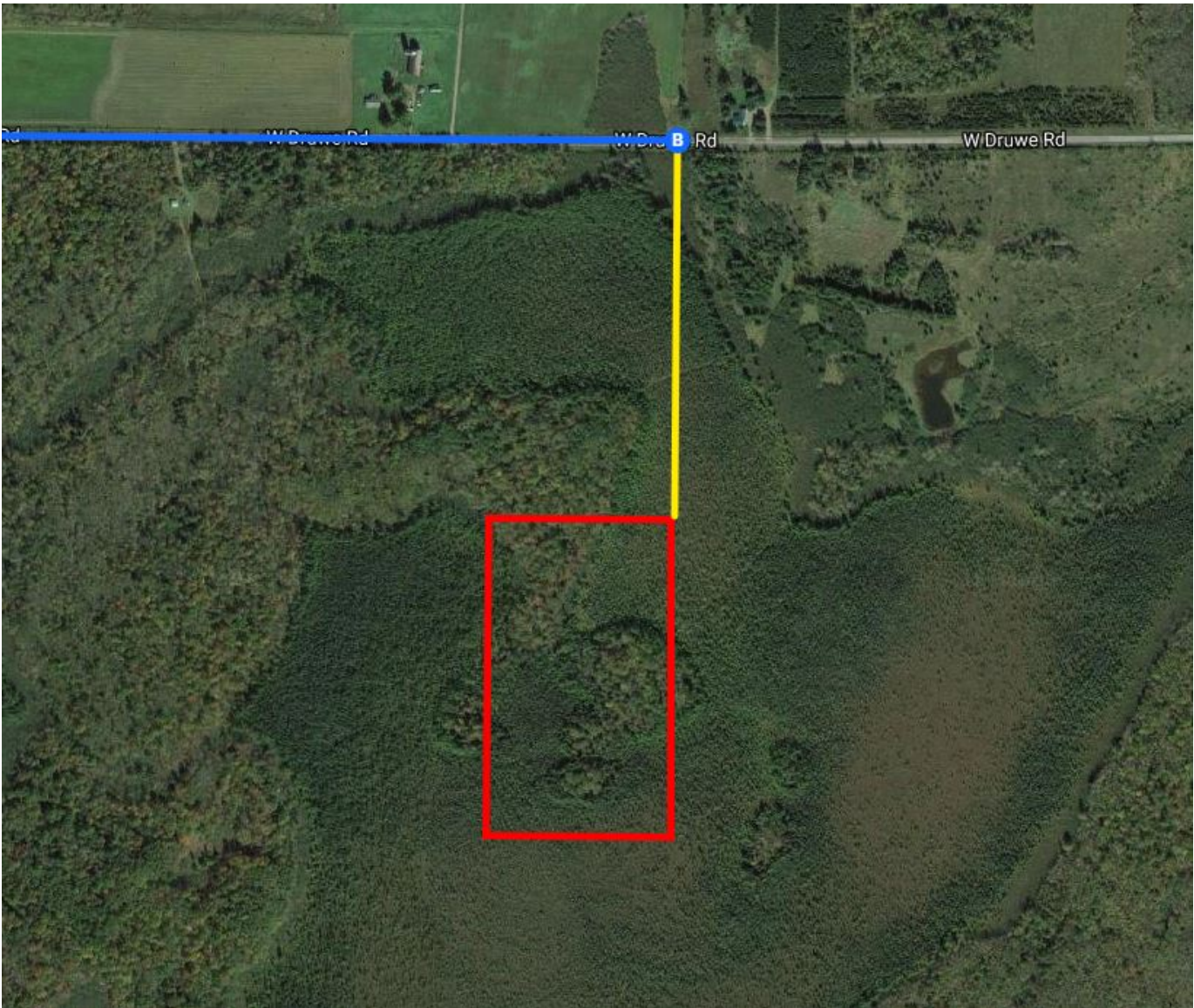
- 17. Turn left onto W Druwe Rd 0.3 mi

- 1.5 mi

9037 W Druwe Rd

Exeland, WI 54835

These directions are for planning purposes only. You may find that construction projects, traffic, weather, or other events may cause conditions to differ from the map results, and you should plan your route accordingly. You must obey all signs or notices regarding your route.



Continued Directions

At the end of the Google Earth directions continue off-road directly south for 0.27 of a mile to the NE corner of the property.