

Imagery ©2017 Google, Map data ©2017 Google 2 mi

Kingman

Arizona

Get on I-40 W from E Andy Devine Ave/Historic Rte 66 and W Beale St

- 5 min (1.3 mi)
- ↑ 1. Head south on N 4th St toward E Andy Devine Ave/Historic Rte 66
292 ft
- ➡ 2. Turn right at the 1st cross street onto E Andy Devine Ave/Historic Rte 66
0.4 mi
- ↑ 3. Continue straight onto Ella's Pl
295 ft
- ↶ 4. Turn left onto W Beale St
0.4 mi
- ⤴ 5. Turn left to merge onto I-40 W toward Los Angeles
0.3 mi

Follow I-40 W to Cal-Ari Dr in Yucca. Take exit 25 from I-40 W

- 19 min (23.4 mi)
- ⤴ 6. Merge onto I-40 W
23.1 mi
- ➡ 7. Take exit 25 toward Alamo Rd
0.3 mi

Take Alamo Rd to Apache Rd

4 min (1.8 mi)

8. Turn left onto Cal-Ari Dr

0.2 mi

9. Turn right onto Alamo Rd

1.4 mi

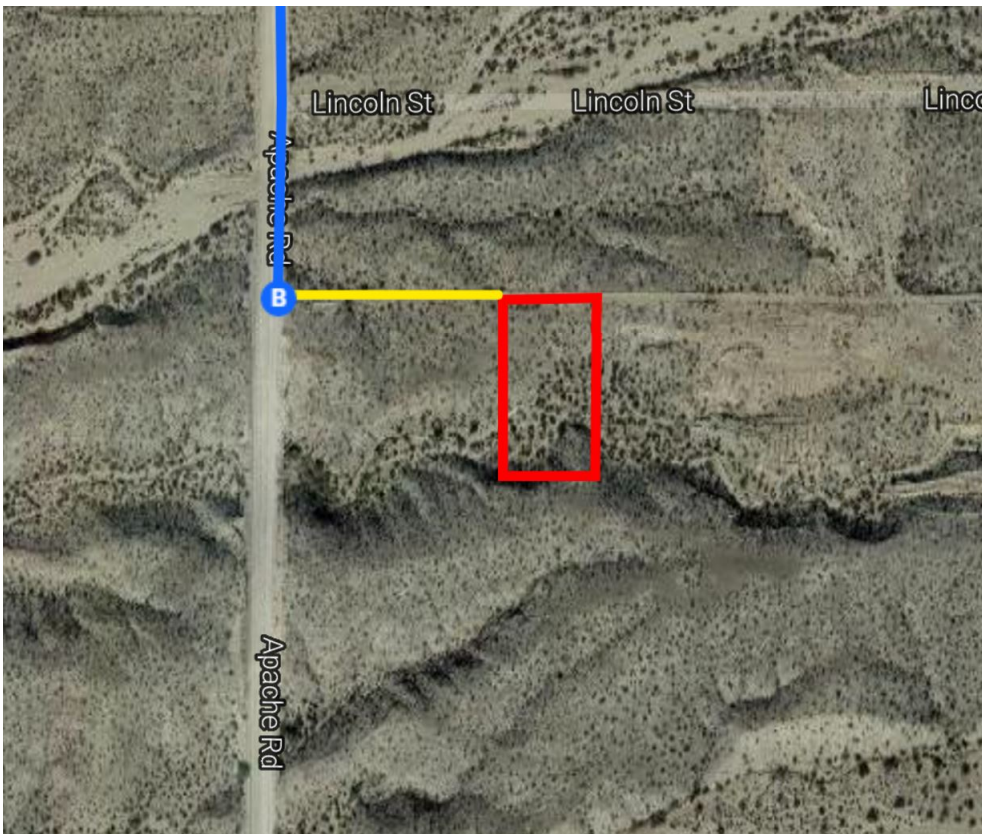
10. Turn right onto Apache Rd

[i](#) Destination will be on the right

0.2 mi

13077-13199 Apache Rd

Yucca, AZ 86438



Continued Directions

At the end of the Google Earth Directions turn left onto the dirt road and continue 357 feet. NW corner of property on right.