

Map data ©2017 Google, INEGI 10 mi

# Phoenix

Arizona

## Get on I-10 W from W Washington St and N 7th Ave

- ↑ 1. Head west on W Washington St toward 1st Ave  
6 min (1.7 mi)

---

- ↻ 2. Use the right 2 lanes to turn right onto N 7th Ave  
⚠ May be closed at certain times or days  
0.5 mi

---

- ↑ 3. Continue straight to stay on N 7th Ave  
⚠ May be closed at certain times or days  
0.2 mi

---

- ↶ 4. Use the left 2 lanes to turn left to merge onto I-10 W toward Los Angeles  
⚠ Parts of this road may be closed at certain times or days  
0.7 mi

---

- ↶ 5. Merge onto I-10 W  
0.4 mi

## Follow I-10 W to AZ-85 S/Phoenix Bypass Rte in Buckeye. Take exit 112 from I-10 W

- ↶ 5. Merge onto I-10 W  
28 min (32.0 mi)

---

- ↻ 6. Take exit 112 for AZ-85 toward I-8/Yuma/San Diego  
30.9 mi

---

- ↻ 7. Take exit 112 for AZ-85 toward I-8/Yuma/San Diego  
1.1 mi

### Get on I-8 W in Gila Bend from Phoenix Bypass Rte


36 min (36.7 mi)

 7. Continue onto AZ-85 S/Phoenix Bypass Rte

32.7 mi

 8. Slight right onto Phoenix Bypass Rte

1.0 mi

 9. Continue onto E Pima St

2.4 mi

 10. Merge onto I-8 W via the ramp to San Diego

0.6 mi

### Follow I-8 W to Ave 64E in Dateland. Take exit 67 from I-8 W

37 min (47.2 mi)

 11. Merge onto I-8 W

46.9 mi

 12. Take exit 67 toward Dateland

0.3 mi

### Continue on Ave 64E to your destination

16 min (7.6 mi)

 13. Turn right onto Ave 64E

3.9 mi

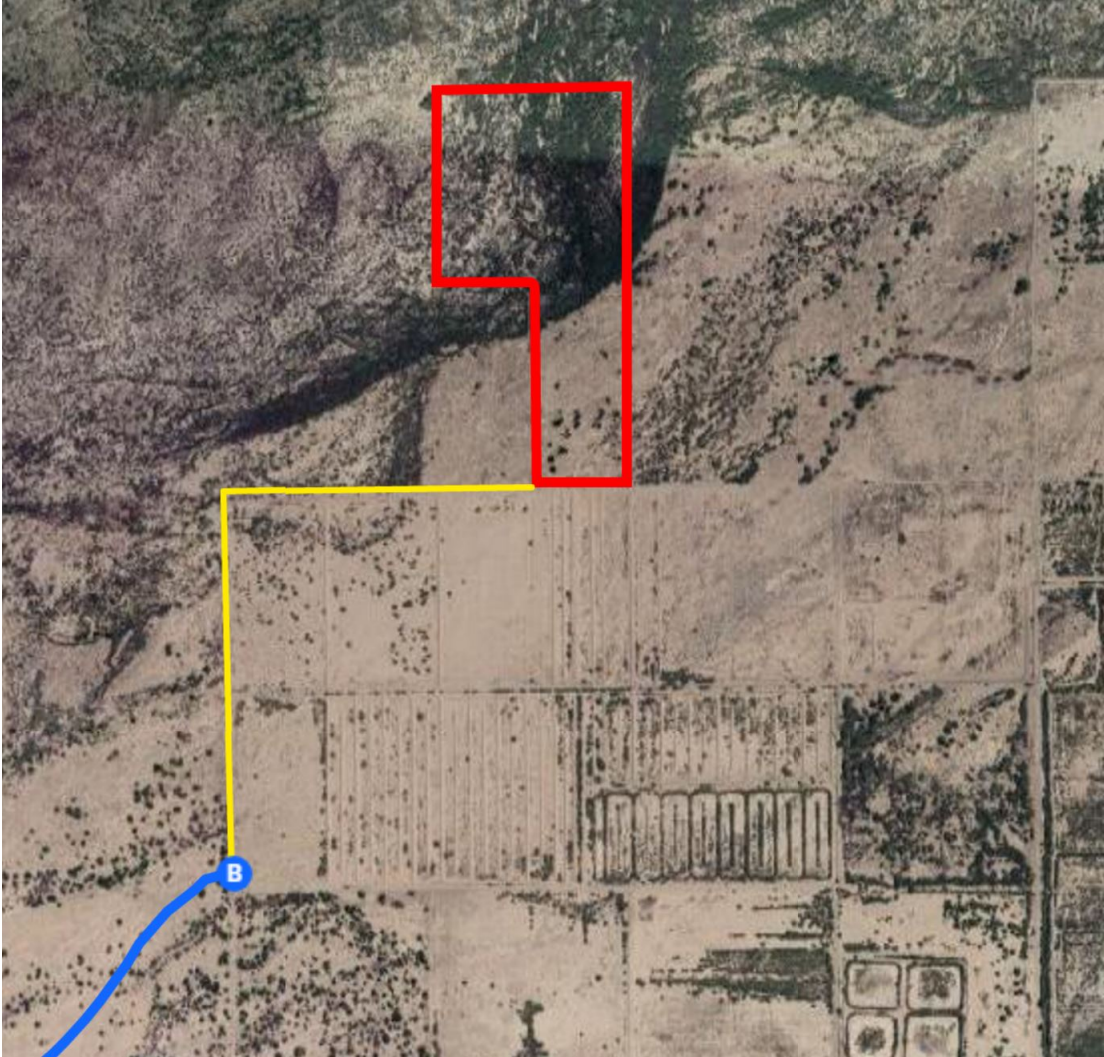
 14. Turn right

3.7 mi

## Unnamed Road

Dateland, AZ 85333

These directions are for planning purposes only. You may find that construction projects, traffic, weather, or other events may cause conditions to differ from the map results, and you should plan your route accordingly. You must obey all signs or notices regarding your route.



Continued Directions

At the end of the Google earth directions turn left along the dirt road. Follow the road for 0.84 mile to the southern boarder of the property.