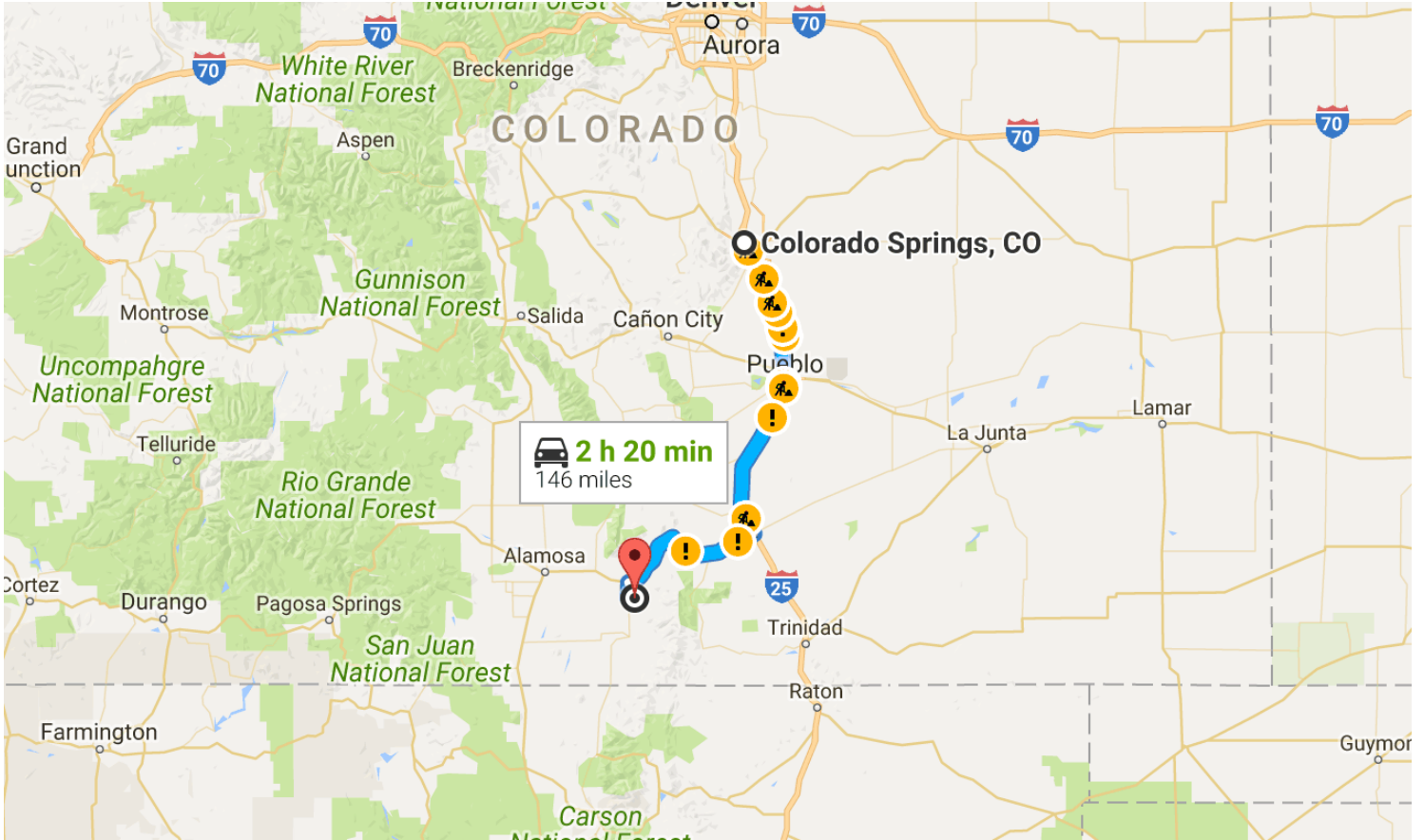




Directions from Colorado Springs, CO to



Colorado Springs, CO

Get on I-25 S

1.7 mi

↑ Head northwest on Pikes Peak Ave toward S Nevada Ave

59 ft

↶ Turn left at the 1st cross street onto S Nevada Ave

1.3 mi

↶ Turn left to merge onto I-25 S

0.4 mi

Follow I-25 S to US-160 W in Huerfano County. Take exit 50 from I-25 S

89.7 mi

↶ Merge onto I-25 S

89.6 mi

↶ Take exit 50 for U.S. 160 W

0.2 mi

Continue on US-160 W to your destination in Costilla County

54.9 mi

↶ Turn left onto US-160 W

0.9 mi

↶ Turn left onto US-160 W/Main St

0.1 mi

↷ Turn right at the 2nd cross street onto US-160 W/W 7th St

[Continue to follow US-160 W](#)

47.0 mi

↶ Turn left onto CO-159 S

4.7 mi

↶ Turn left onto Rd CC/Co Ln 6/Z 7

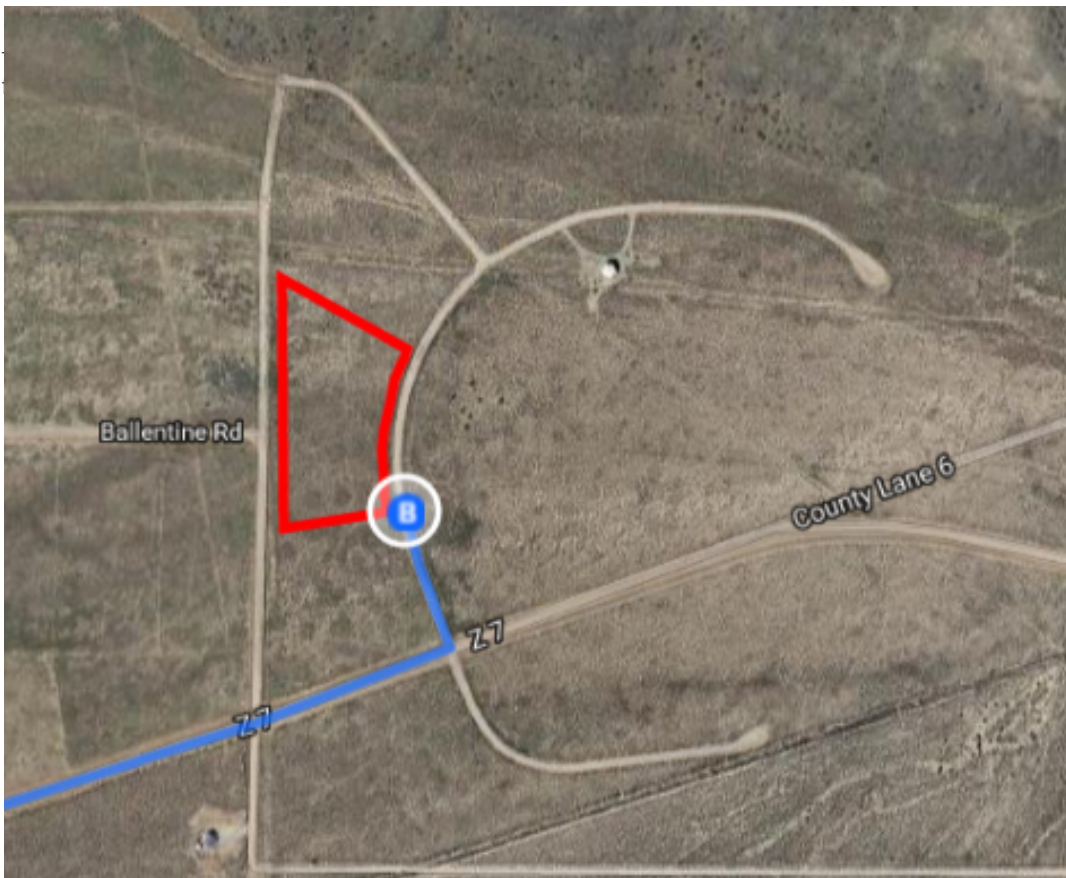
[Continue to follow Z 7](#)

2.1 mi

↶ Turn left

[Destination will be on the left](#)

440 ft



Weather events may cause conditions to differ from our route.