

Imagery ©2015 Landsat, Data SIO, NOAA, U.S. Navy, NGA, GEBCO, Map data ©2015 Google

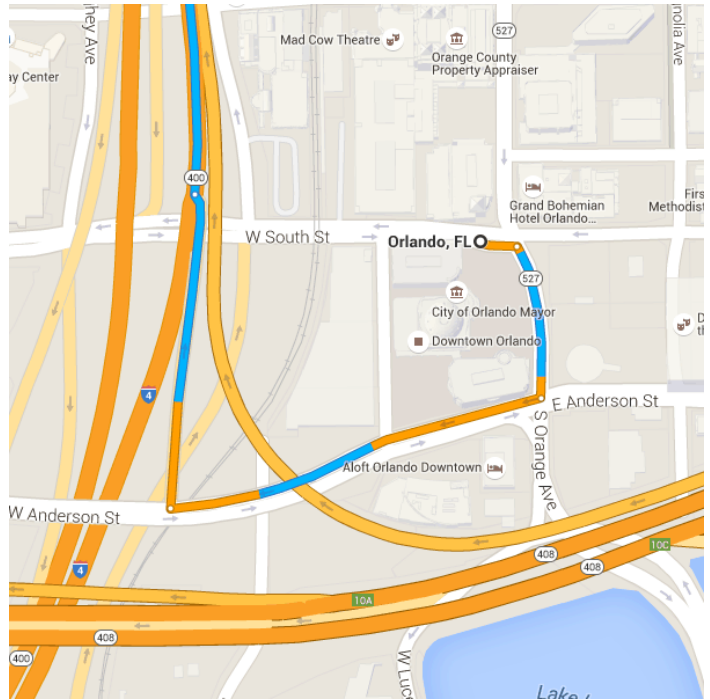
10 mi

Orlando, FL



Get on I-4 E from W Anderson St

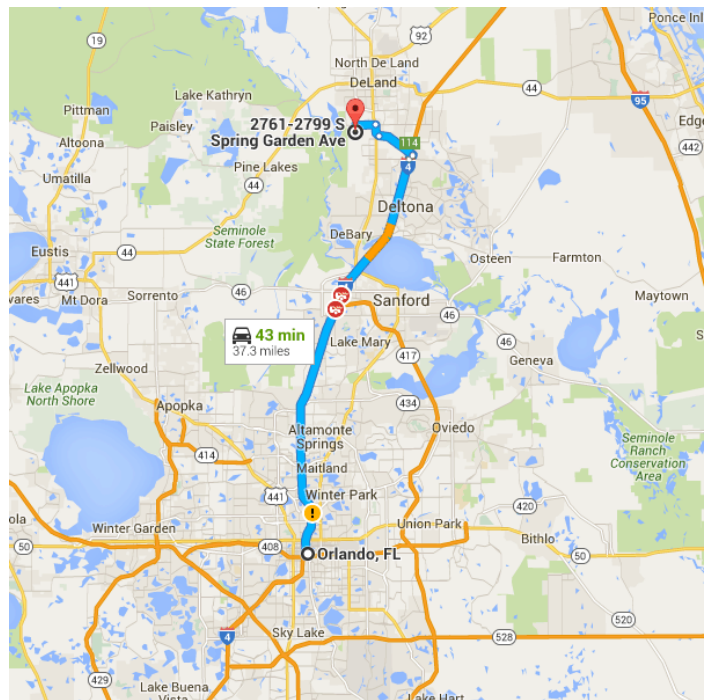
2 min (0.5 mi)

- ↑ 1. Head east on W South St toward S Orange Ave
108 ft
- 2. Turn right onto S Orange Ave
463 ft
- 3. Turn right onto W Anderson St
0.2 mi
- ⤴ 4. Turn right to merge onto I-4 E
0.2 mi




Follow I-4 E to Howland Blvd in Deltona. Take exit 114 from I-4 E

- | | |
|---|---|
| | 29 min (31.0 mi) |
|  | 5. Merge onto I-4 E |
| | 30.7 mi |
|  | 6. Take exit 114 toward FL-472/Deltona/Deland |
| | 0.3 mi |




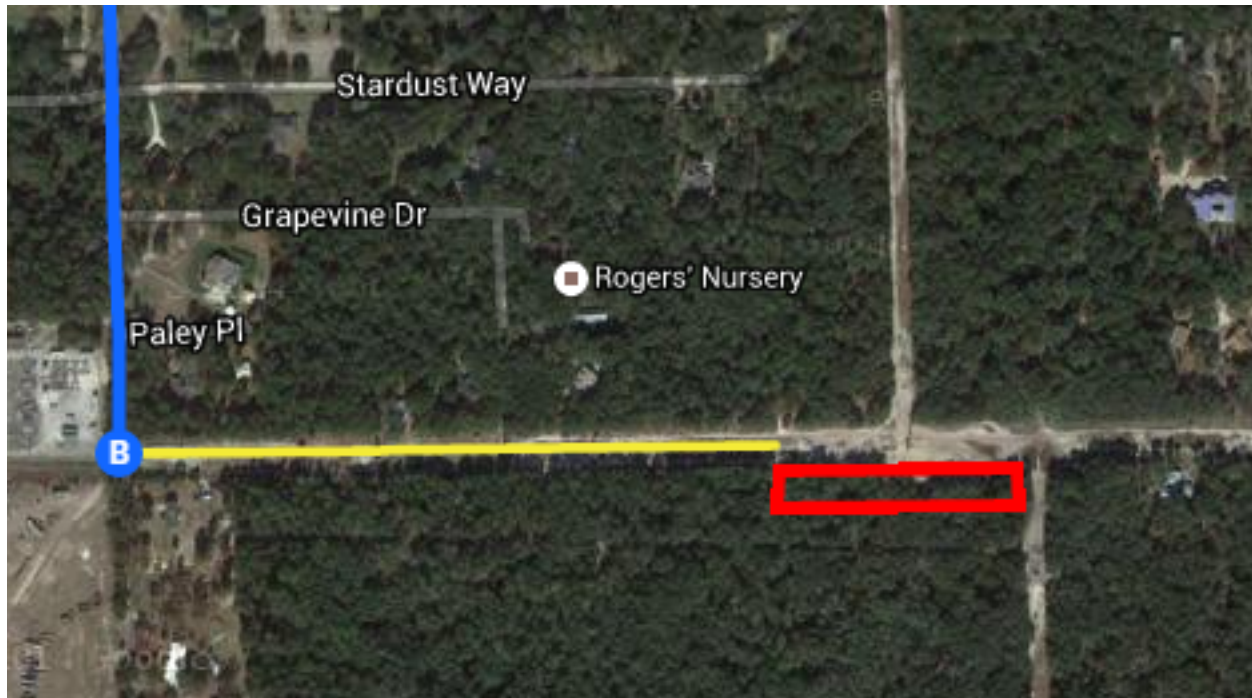
Take FL-472 W and McGregor Rd to S Spring Garden Ave

- | | |
|---|---|
| | 10 min (5.8 mi) |
|  | 7. Use the left 2 lanes to turn left onto Howland Blvd (signs for FL-472 W/Orange City/Historic Dist./Blue Spring/State Park) |
| | 0.1 mi |

-
- A map of Orange City, Florida, showing a route from S Spring Garden Ave to I-4. The route is highlighted in blue and orange. Key streets include S Spring Garden Ave, McGregor Rd, Orange Camp Rd, and I-4. Landmarks like Veterans Memorial Park and Spring Park are also visible.

DeLand, FL 32720

Live traffic *Fast*  *Slow*



Continued Directions

At the end of the Google earth directions turn left and continue along the dirt road for 0.32 of a mile. NW corner of property on right.