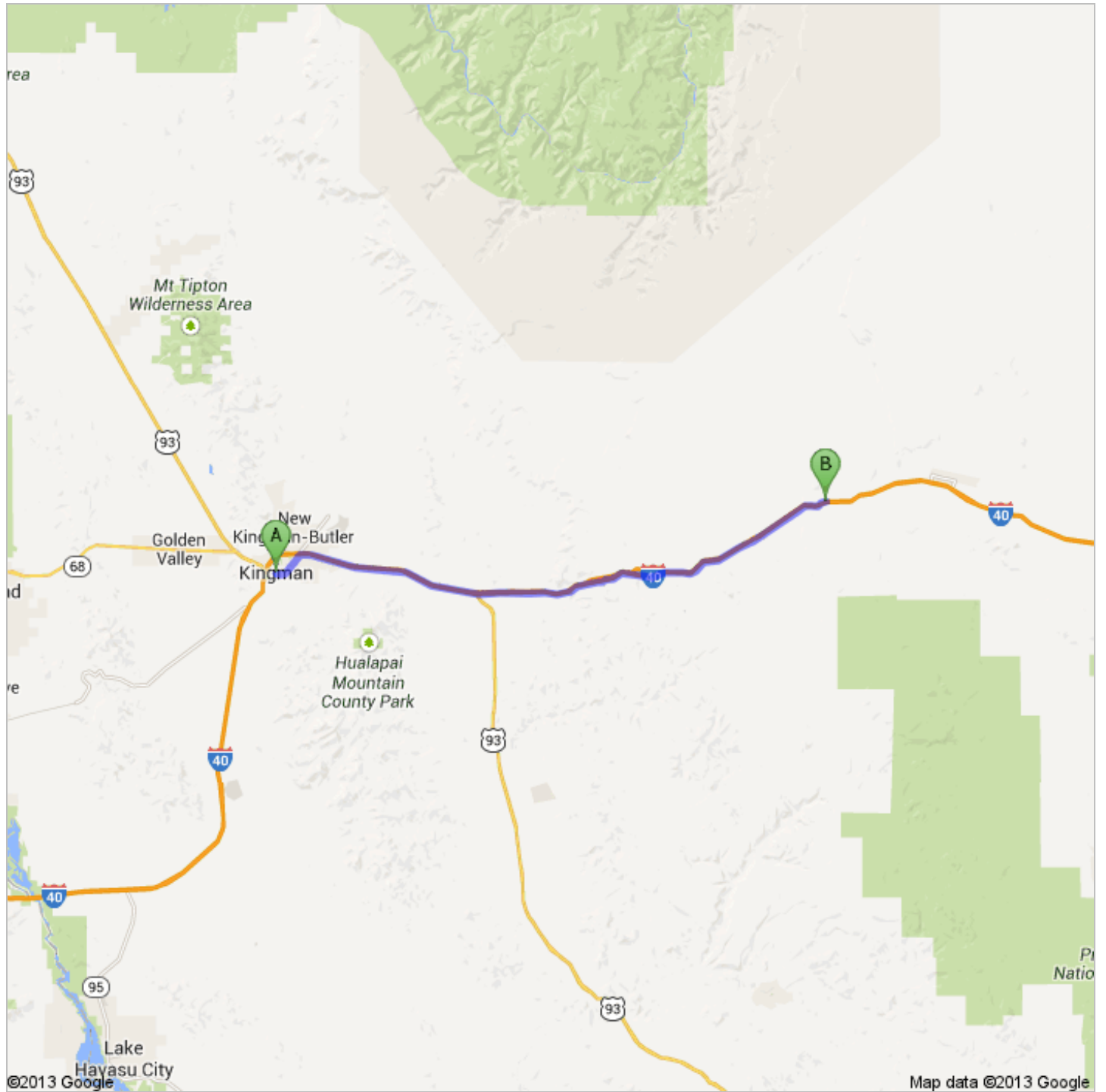




Directions to Unknown road
60.1 mi – about 56 mins




 Kingman, AZ



1. Head **south** on **N 4th St** toward **E Andy Devine Ave**


go 312 ft
total 312 ft



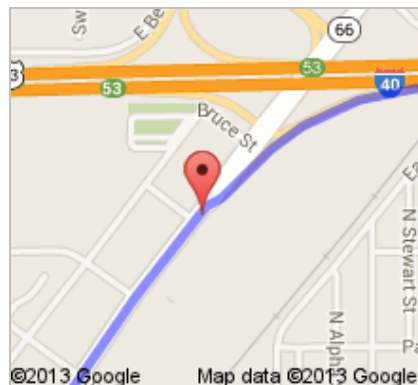
 2. Take the 1st left onto **E Andy Devine Ave**
About 7 mins

go 3.3 mi
total 3.3 mi



 3. Merge onto **I-40 E/US-93 S** via the ramp to **Flagstaff/Phoenix**
Continue to follow I-40 E
About 45 mins

go 55.7 mi
total 59.0 mi



 4. Take exit **109** for **Anvil Rock Rd**
About 55 secs

go 0.3 mi
total 59.4 mi



©2013 Google Map data ©2013 Google

5. Turn left onto **N Anvil Rock Rd**
About 1 min

go 0.2 mi
total 59.6 mi



©2013 Google Map data ©2013 Google

6. Turn right
Destination will be on the right
About 2 mins

go 0.5 mi
total 60.1 mi



©2013 Google Map data ©2013 Google

B Unknown road

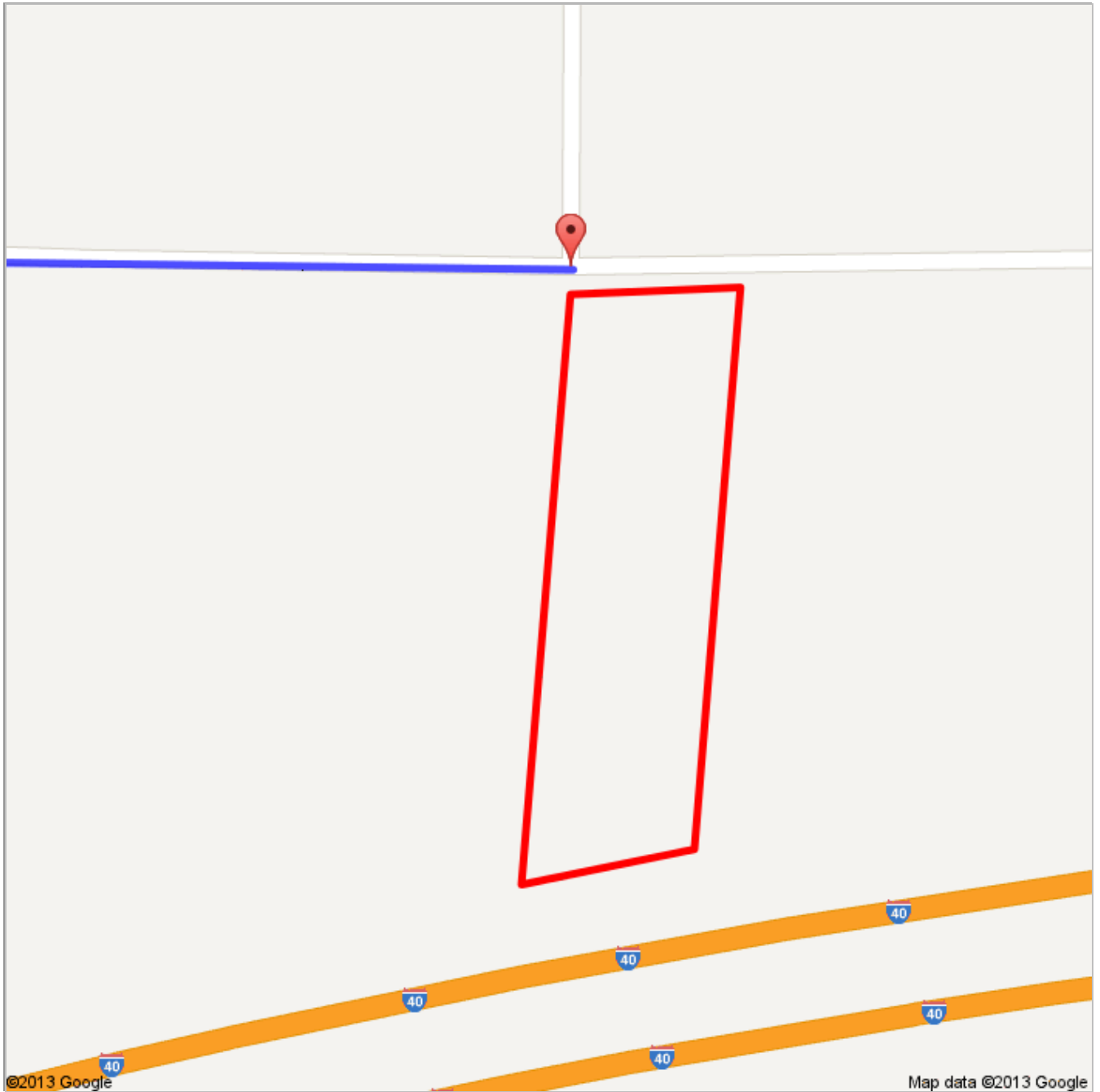


©2013 Google Map data ©2013 Google

These directions are for planning purposes only. You may find that construction projects, traffic, weather, or other events may cause conditions to differ from the map results, and you should plan your route accordingly. You must obey all signs or notices regarding your route.

Map data ©2013 Google

Directions weren't right? Please find your route on maps.google.com and click "Report a problem" at the bottom left.




©2013 Google


Map data ©2013 Google


8263.kmz


Public · 0 views
Created on Aug 27 · By Bryson · Updated < 1 minute ago

 Untitled Polygon

 From: Kingman, AZ

 Driving directions to 35.293438, -113.079428

 To: 35.293438, -113.079428

 From: Kingman, AZ