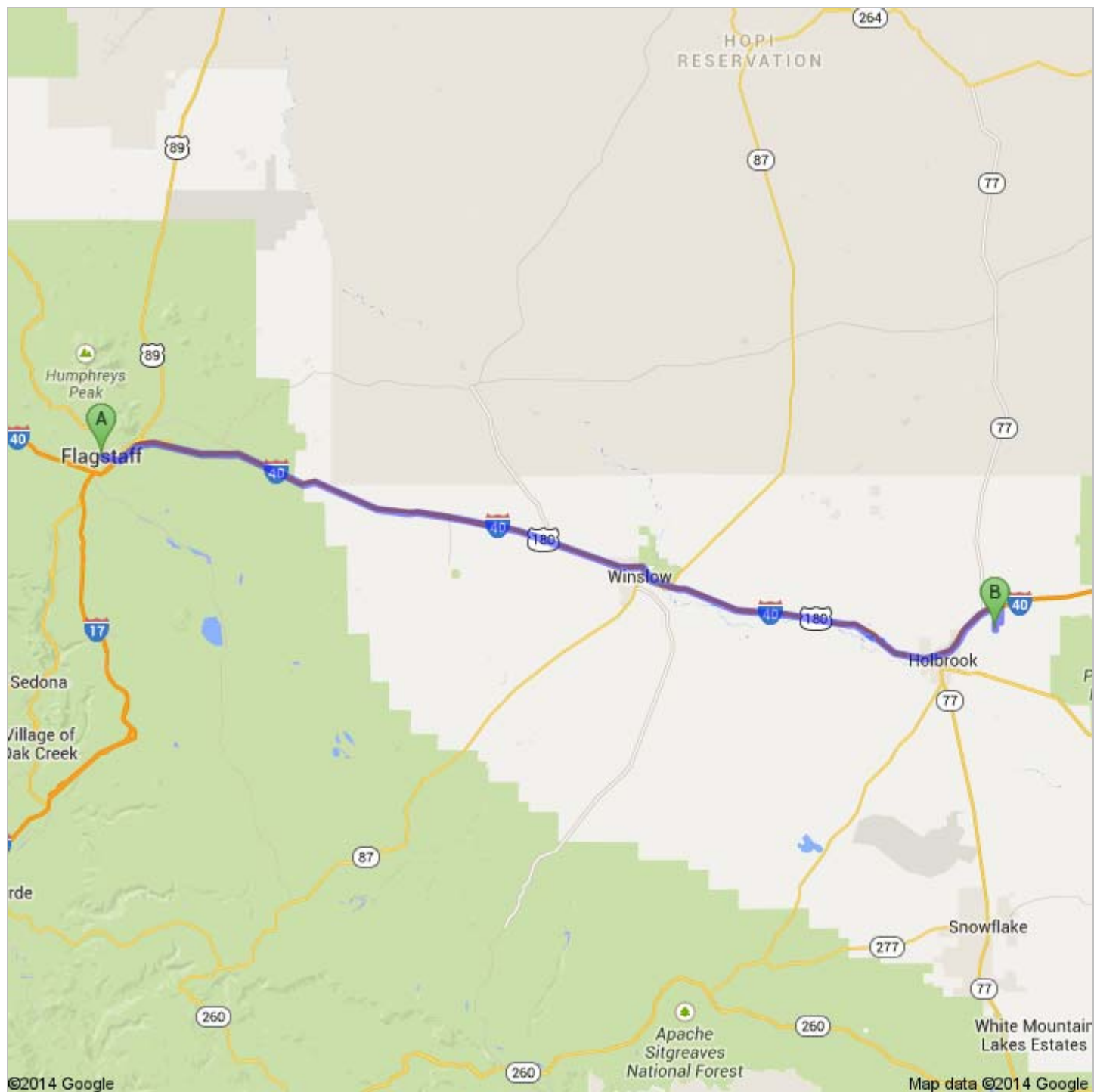




Directions to Legacy Ranch Dr  
101 mi – about 1 hour 34 mins



**A** Flagstaff, AZ



1. Head **south** on **N Humphreys St** toward **Old Santa Fe**

go 46 ft  
total 46 ft



 2. Turn left onto **Historic Rte 66/US-180 E**  
About 3 mins

go 1.4 mi  
total 1.4 mi



 3. Turn right onto **Ponderosa Pkwy**


go 0.2 mi  
total 1.6 mi



4. Continue straight onto **E Butler Ave**  
About 1 min

go 0.4 mi  
total 2.0 mi



 5. Turn left to merge onto **I-40 E** toward **Albuquerque**  
About 1 hour 18 mins


go 95.7 mi  
total 97.8 mi



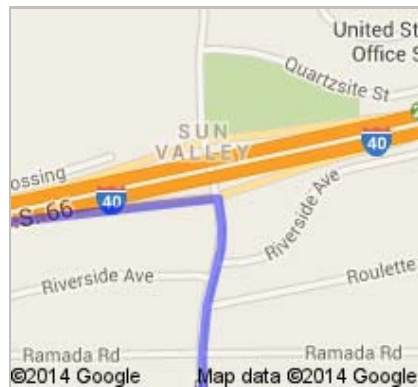
 6. Take exit **294** for **Sun Valley Rd**


go 0.3 mi  
total 98.0 mi



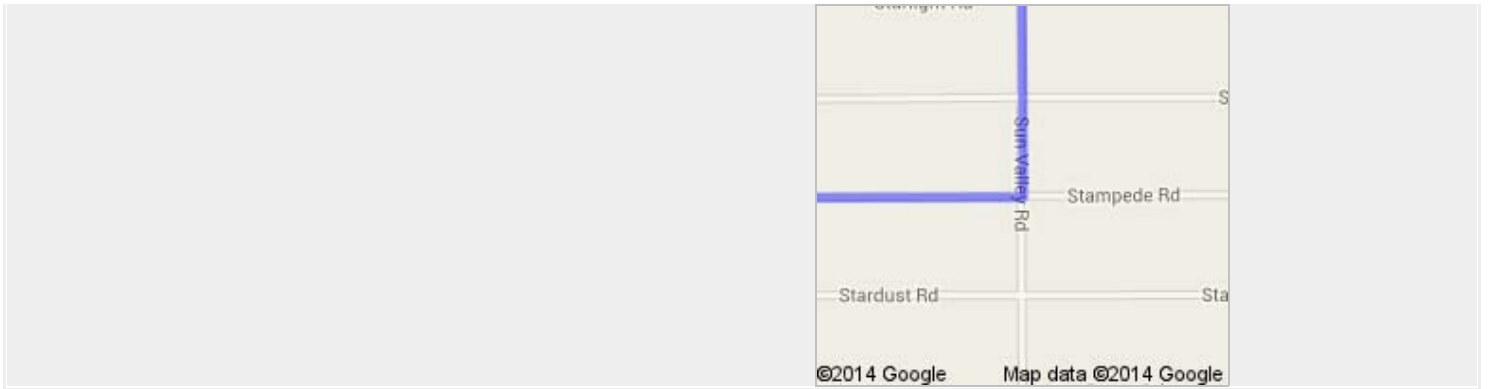
 7. Turn right onto **Sun Valley Rd**  
About 6 mins

go 1.5 mi  
total 99.5 mi



 8. Turn right onto **Stampede Rd**  
About 1 min

go 0.5 mi  
total 100.0 mi



9. Turn left onto **Legacy Ranch Dr**  
Destination will be on the right  
About 3 mins

go 0.8 mi  
total 101 mi

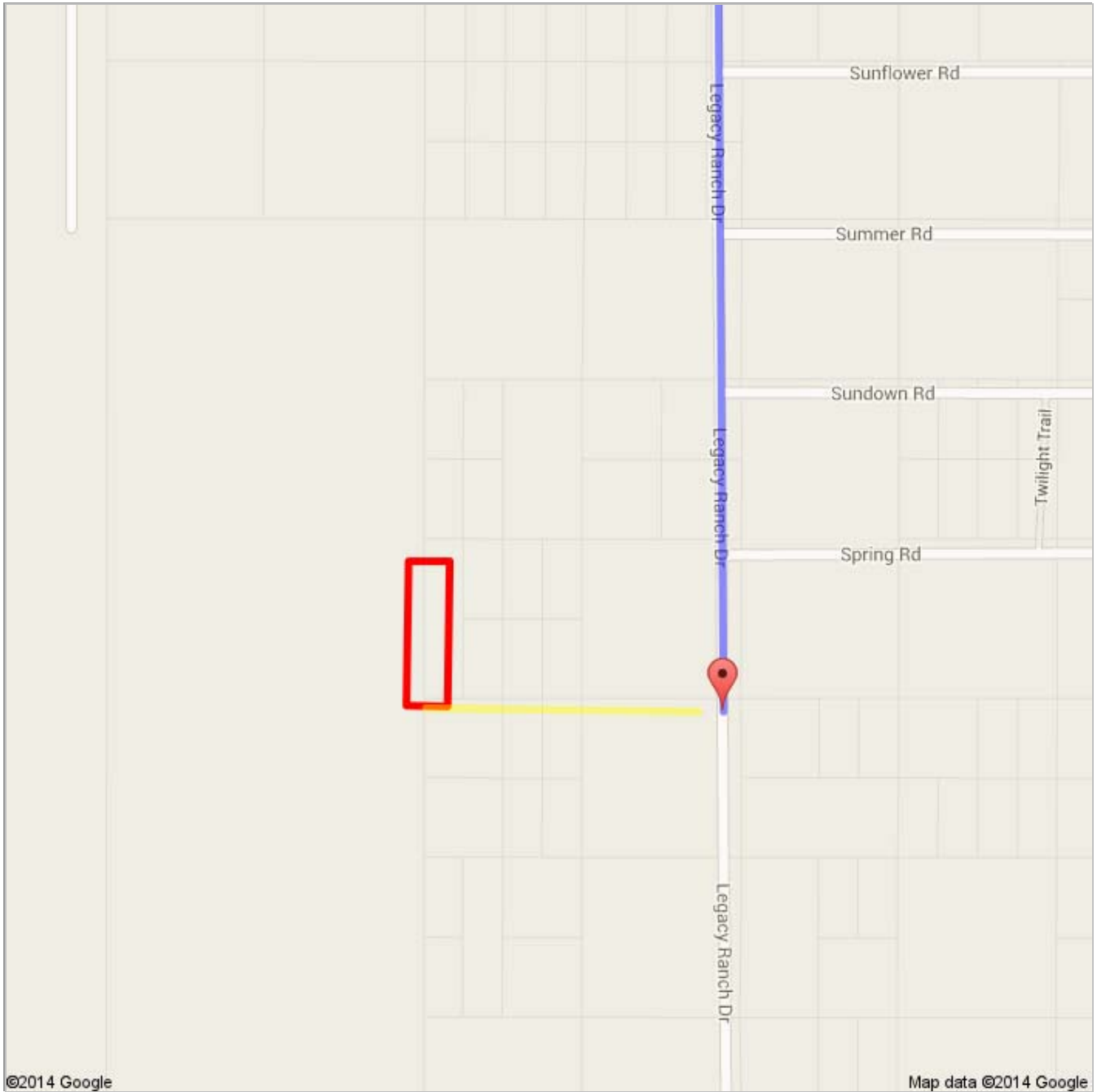


**B** Legacy Ranch Dr



These directions are for planning purposes only. You may find that construction projects, traffic, weather, or other events may cause conditions to differ from the map results, and you should plan your route accordingly. You must obey all signs or notices regarding your route.  
Map data ©2014 Google


Directions weren't right? Please find your route on [maps.google.com](https://maps.google.com) and click "Report a problem" at the bottom left.





### 7517.kmz

Public · 0 views  
Created on Sep 3 · By Bryson · Updated < 1 minute ago

 Untitled Polygon

 From: Flagstaff, AZ

 Driving directions to 34.947496, -110.067227

 To: 34.947496, -110.067227

 Continued Directions

Unfortunately Google Maps doesn't recognize some of the roads in the area. The yellow line represents continued

directions from the Google Maps ending point to the outline of your property a distance of 0.21 of a mile.  
At the end of the Google earth directions turn right and continue 0.21 of a mile.  
SE corner of property on right.